

# Installation instructions for the Coinvent System:

=====

## Requirements:

-- A linux operating system preferably Ubuntu Trusty Tahr 14.04 or later.

-- Installation by root of the HETS toolkit:

[http://www.informatik.uni-bremen.de/agbkb/forschung/formal\\_methods/CoFI/hets/installation\\_e.htm](http://www.informatik.uni-bremen.de/agbkb/forschung/formal_methods/CoFI/hets/installation_e.htm)

## Instructions:

The following packages should be installed using a package manager such as apt-get or synaptic. For example run

```
sudo apt-get install liblablgtksourceview2-ocaml-dev lilypond timidity imagemagick  
java-common python2.7 python2.7-dev lua5.1 lua5.1-policy-dev
```

Install on your machine cpdf from here (Choose the right executable for your operating system):

<http://community.coherentpdf.com>

place the right executable (cpdf) in your path for example, in a terminal from the directory where cpdf is downloaded type

```
sudo cp cpdf /usr/bin
```

```
sudo chmod a+x /usr/bin/cpdf
```

to check /usr/bin is in your path type

```
echo $PATH
```

(choose a directory that is displayed by that command)

=====

Install the Amalgamation software in your home directory (~):

```
git clone https://github.com/meppe/Amalgamation.git
```

=====

Run the following command in your home directory (~):

```
git clone https://github.com/ewenmaclean/coinvent_demo
```

now type the following commands:

```
cd ~/coinvent_demo
./build_interface
```

you can now run the system by typing

```
cd ~/coinvent_demo
./coinvent
```

The following extras are optional to give a desktop icon on ubuntu, and useful casl syntax highlighting:

=====

In ubuntu, run the following commands:

```
cd ~/coinvent_demo
sudo cp casl.lang /usr/share/gtksourceview-2.0/language-specs
sudo cp casl.xml /usr/share/mime/packages
sudo update-mime-database
```

=====

Edit the file coinvent.desktop and run\_coinvent.sh in the coinvent\_demo directory, replace the \$HOME with the actual value of \$HOME -- i.e. the result of typing

```
echo $HOME
```

now copy the desktop item and make the executable runnable - type these commands:

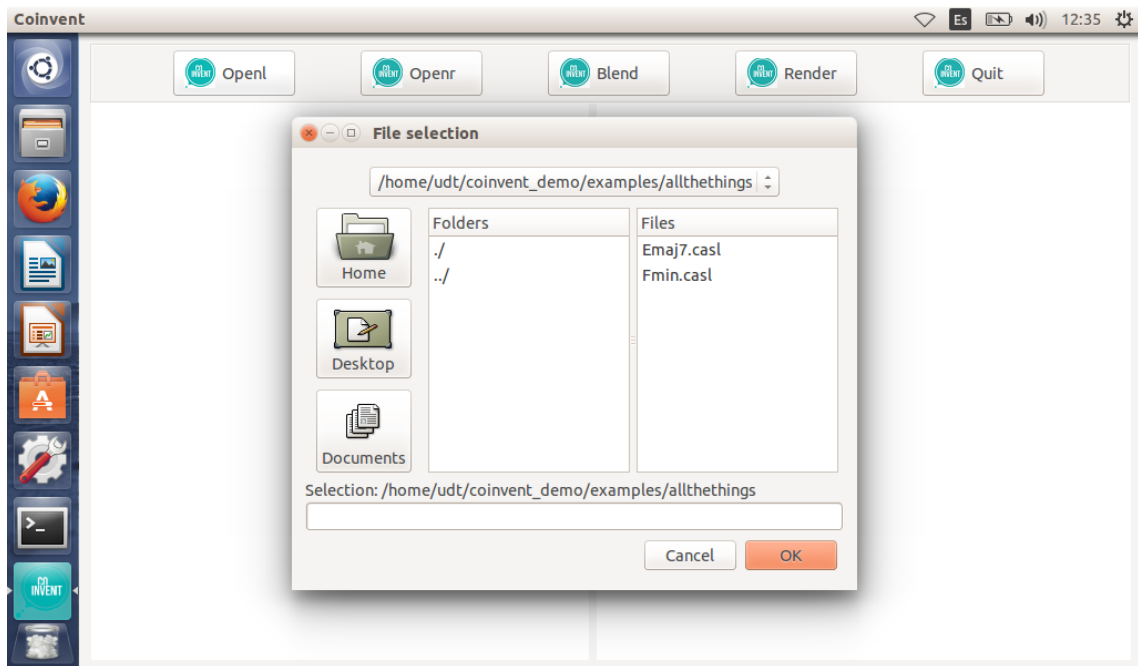
```
cd ~/coinvent_demo
chmod a+x run_coinvent.sh
cp coinvent.desktop ~/Desktop
```

===

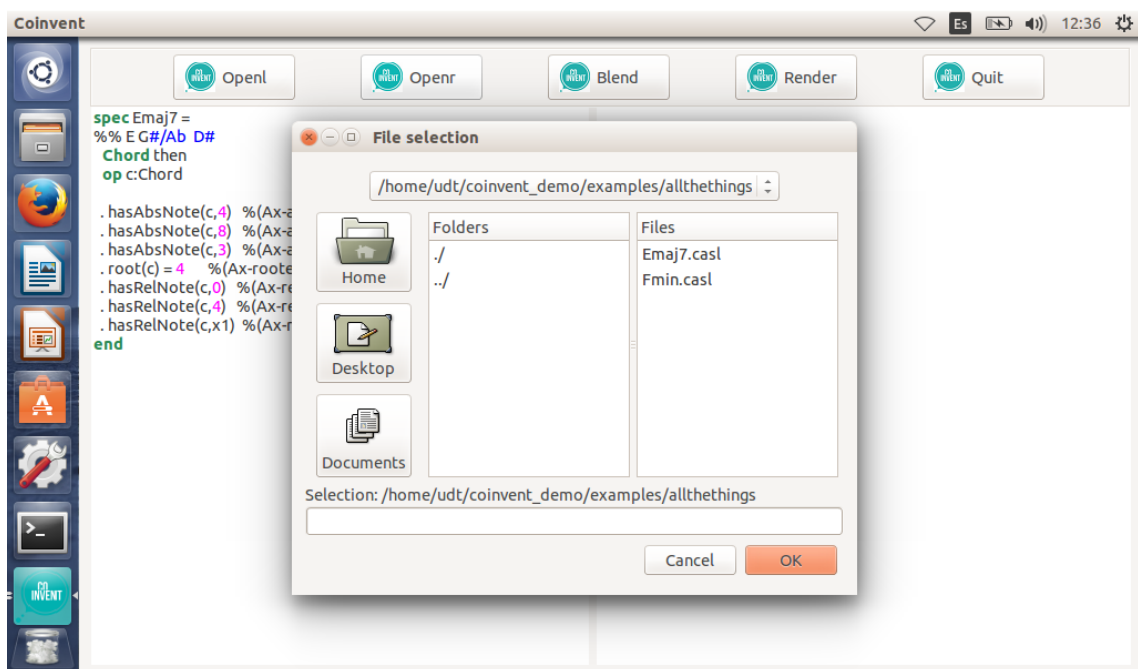
Now you should be ready to run the system by double clicking the item on the Desktop  
- some examples are in the examples directory.

Follow the images to get a blend with some examples:

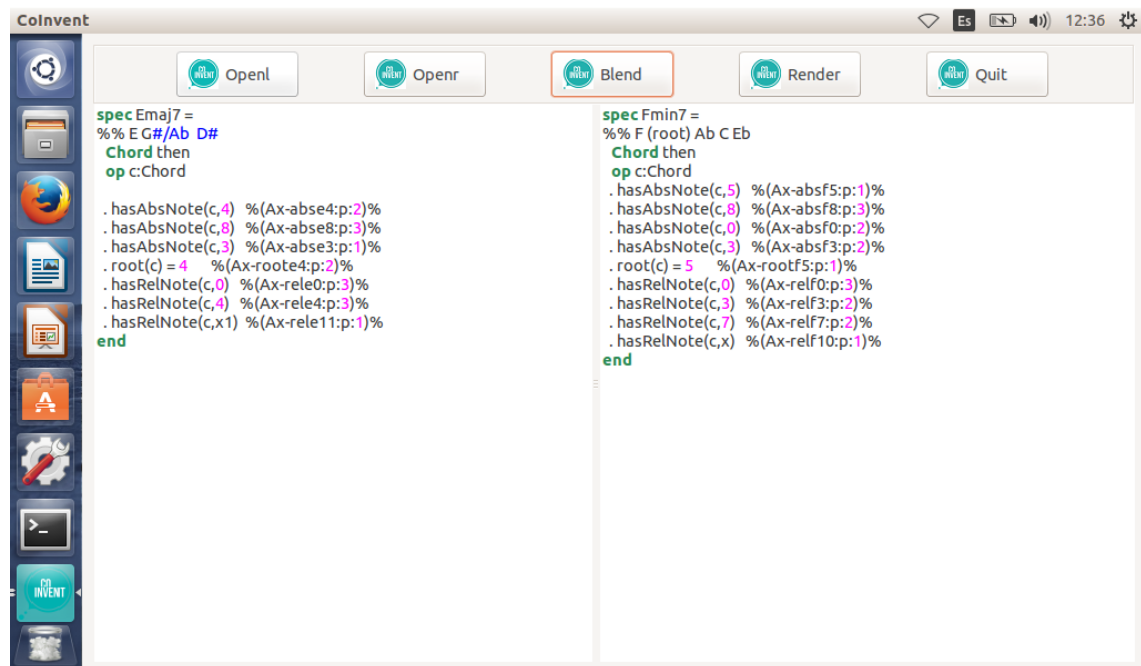
### 1. Open from Openl



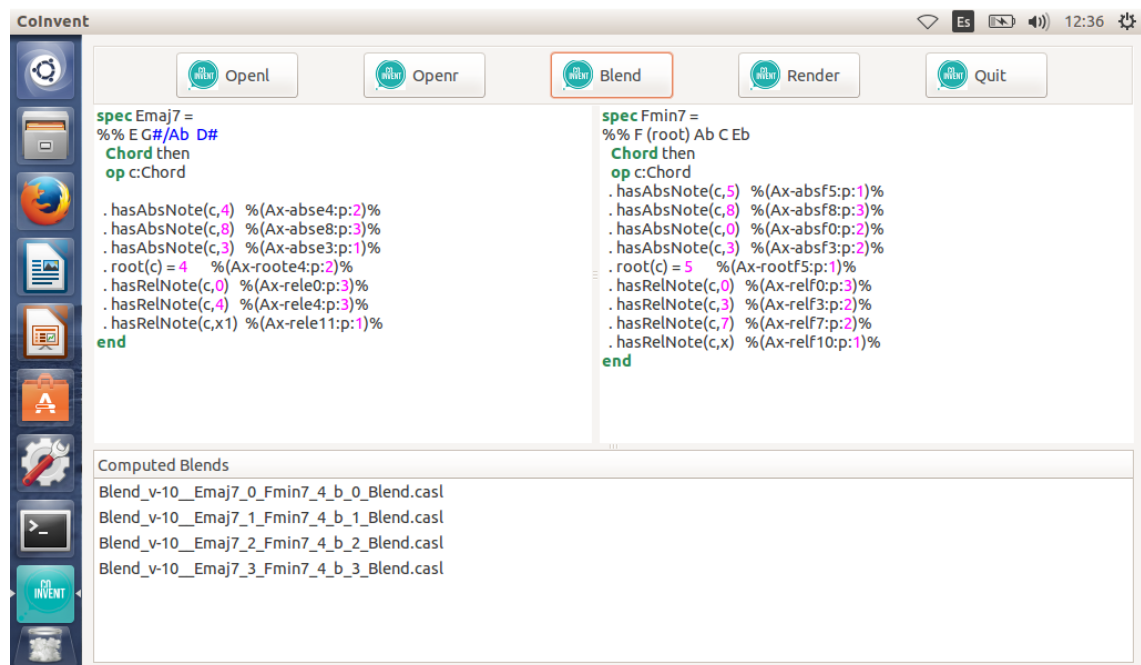
### 2. Open from Openr



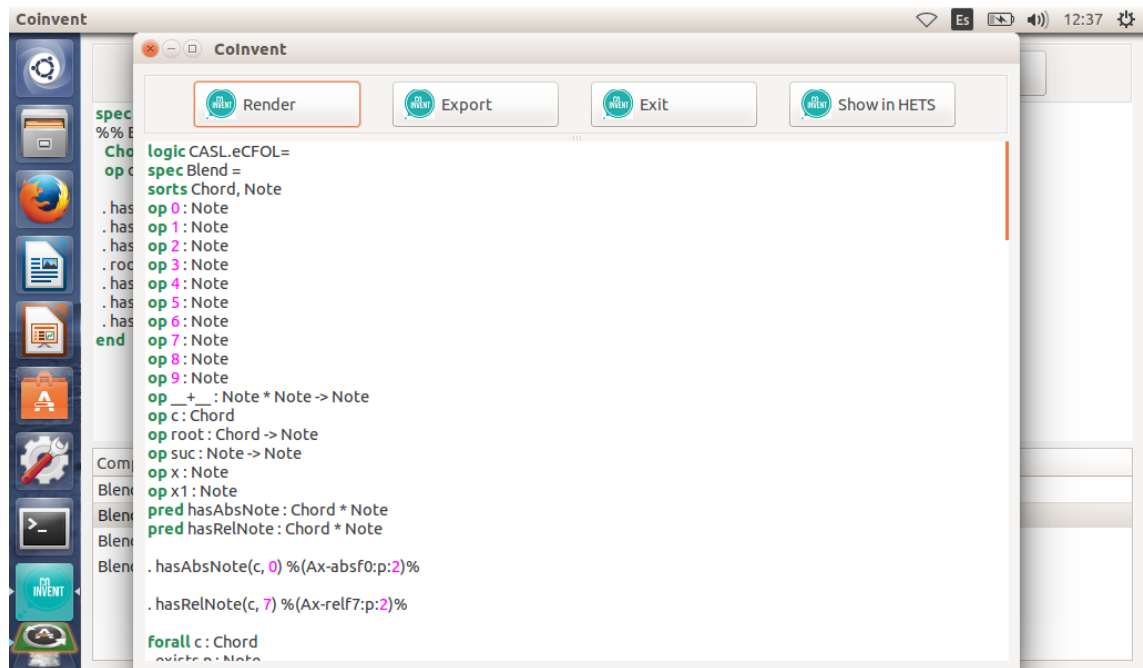
3. Choose “Music progression” from the Theory menu option, suddenly you can choose “Use cached examples” from the Action menu option.



4. Push Blend from the Coinvent application, some blends will be generated.



5. Open any generated blend, select all the text (Ctrl+A) and push Render.



6. Finally you will get a new music progression, play it!

